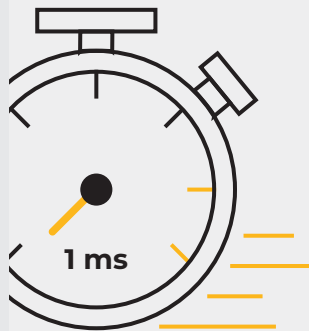


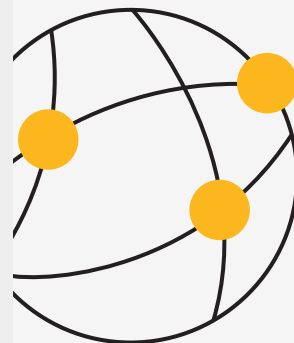
Ultra-High Definition

Increasing demand for high resolution videos.



Ultra-Low Latency

Users want to view streams as close to real-time as possible.



Content Delivery Network

Minimize congestion and server workload.

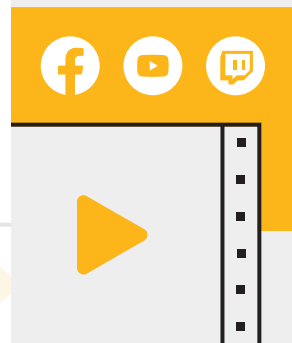


Video-on-Demand

Customers want to watch content on their terms.

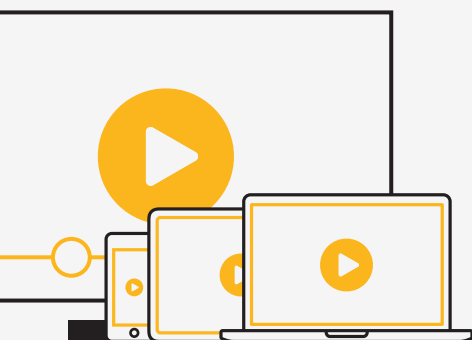


Market Trends for Broadcasting



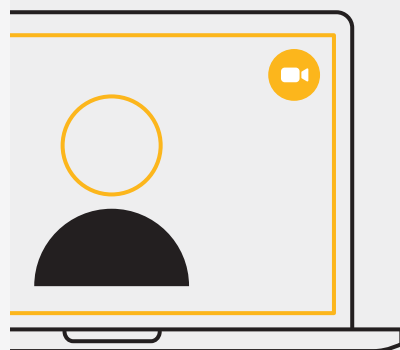
Multi-Streaming

Reach your audience on their favorite platform.



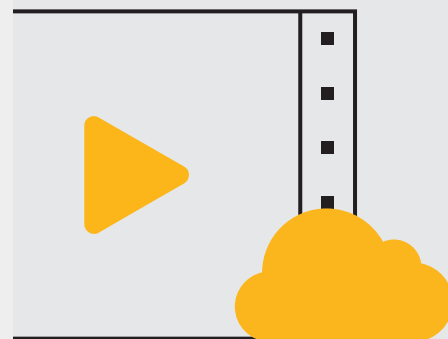
Streaming Video-on-Demand

Save content on the cloud for users to watch at any time from anywhere.



Remote Production

Work with the best talent from around the world.



Streaming via Cloud

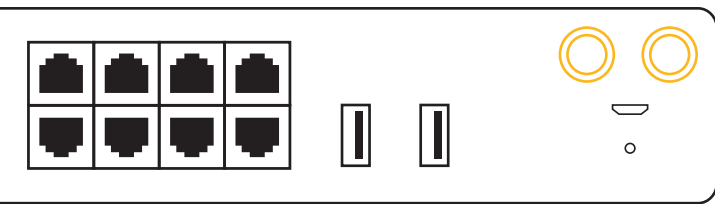
Stream to the cloud, broadcast to the world.

What's Unique about Peplink

Multi-cellular router for Broadcasting

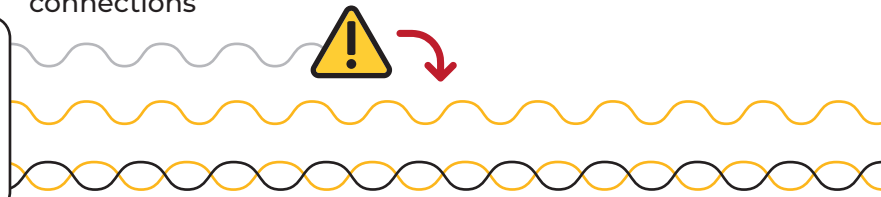


Peplink Devices

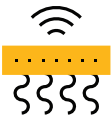


Seamless Failover

Protects persistent connections



Smart algorithms for achieving smooth, jitter-free connections



Bandwidth Bonding - Bonds multiple connections into one

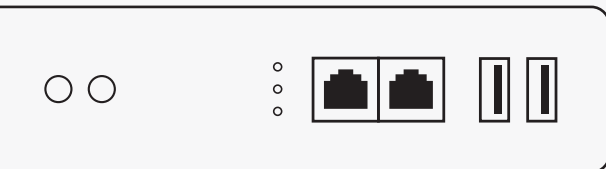


Supports streaming multiple file formats



256-AES encrypted VPN with additional security at every layer and point for complete protection.

Their Devices



Cold Failover

1-2 minute outage, call dropped, jitter, and packet loss



No / little protection against packet loss, resulting in poor quality transmissions



No / limited bonding



Only streams the video file



Basic VPN

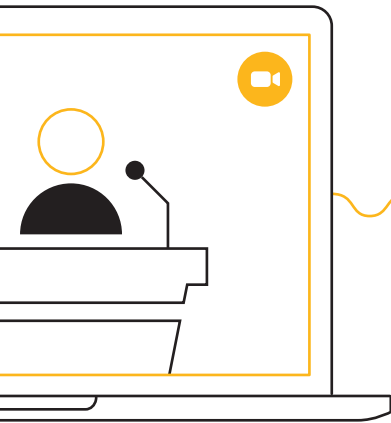
Remote Lectures

UBR LTE

- Multi-WAN inputs
- Advanced VPN protection
- SpeedFusion technology



Workflow



Lecturers

VPN endpoint providing Bandwidth Bonding, WAN Smoothing, and other features for smooth, unbroken video conferencing.



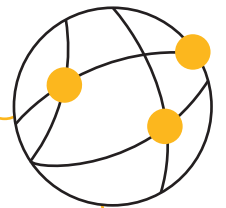
UBR LTE

Dual-cellular router with redundant SIM slots, providing an all-in-one WAN solution.

LTE LTE ADSL

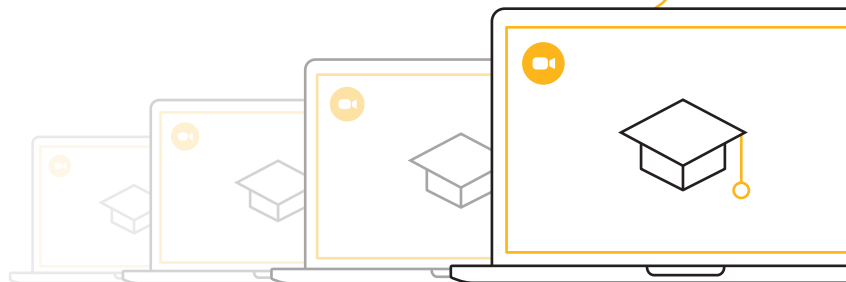


Internet



Students

Easily deliver quality video to large classes seamlessly.



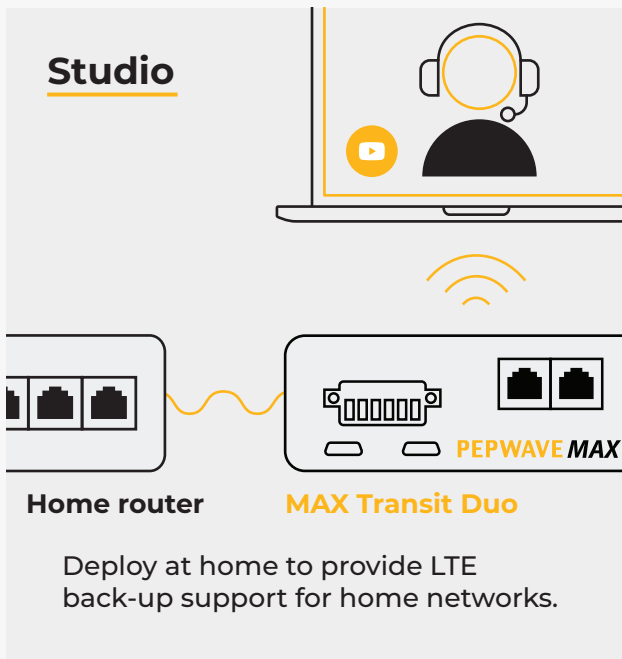
YouTuber

MAX Transit Duo

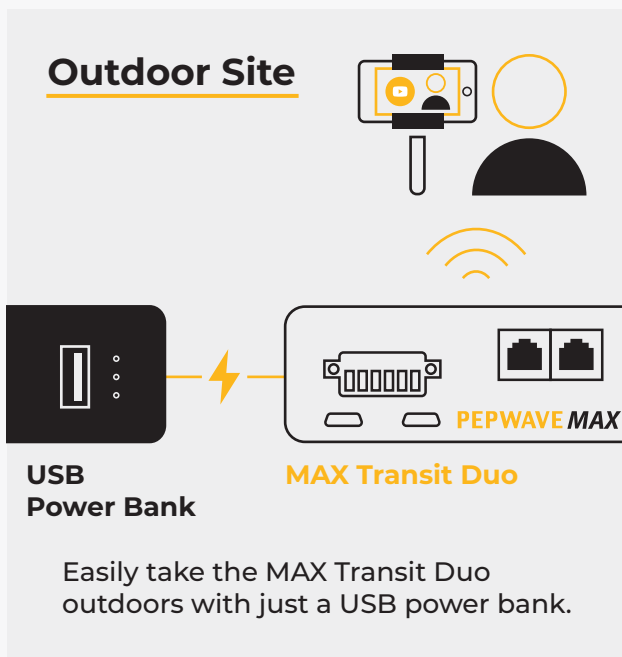
- Portable dual cellular multi-WAN router
- USB power input
- SpeedFusion technology



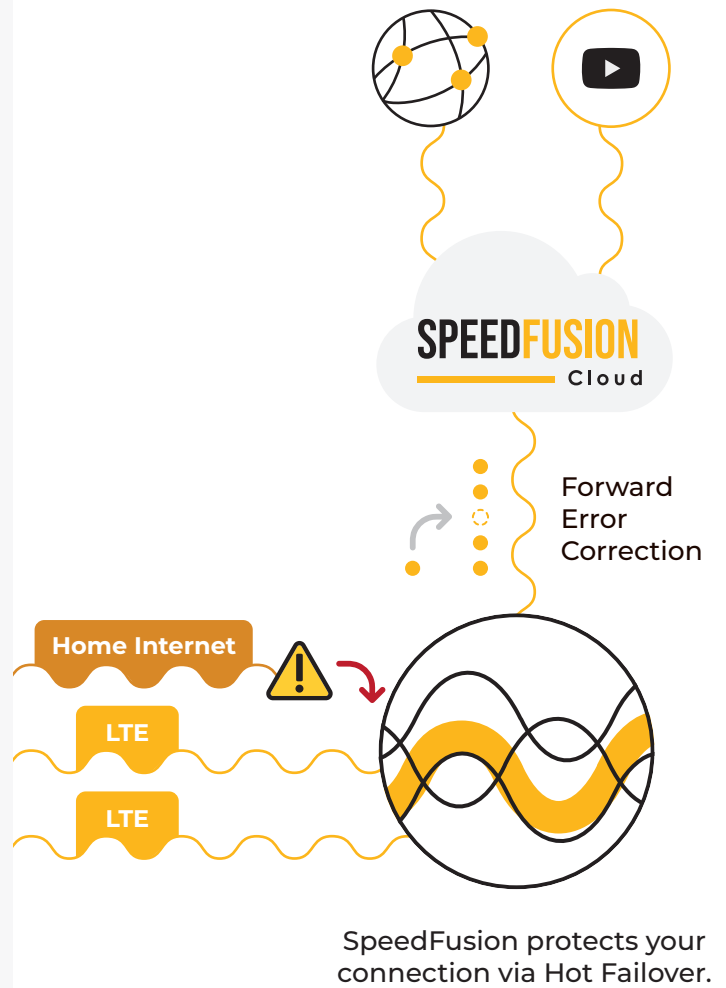
Workflow



OR



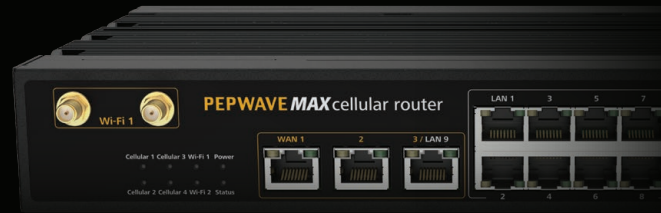
Internet



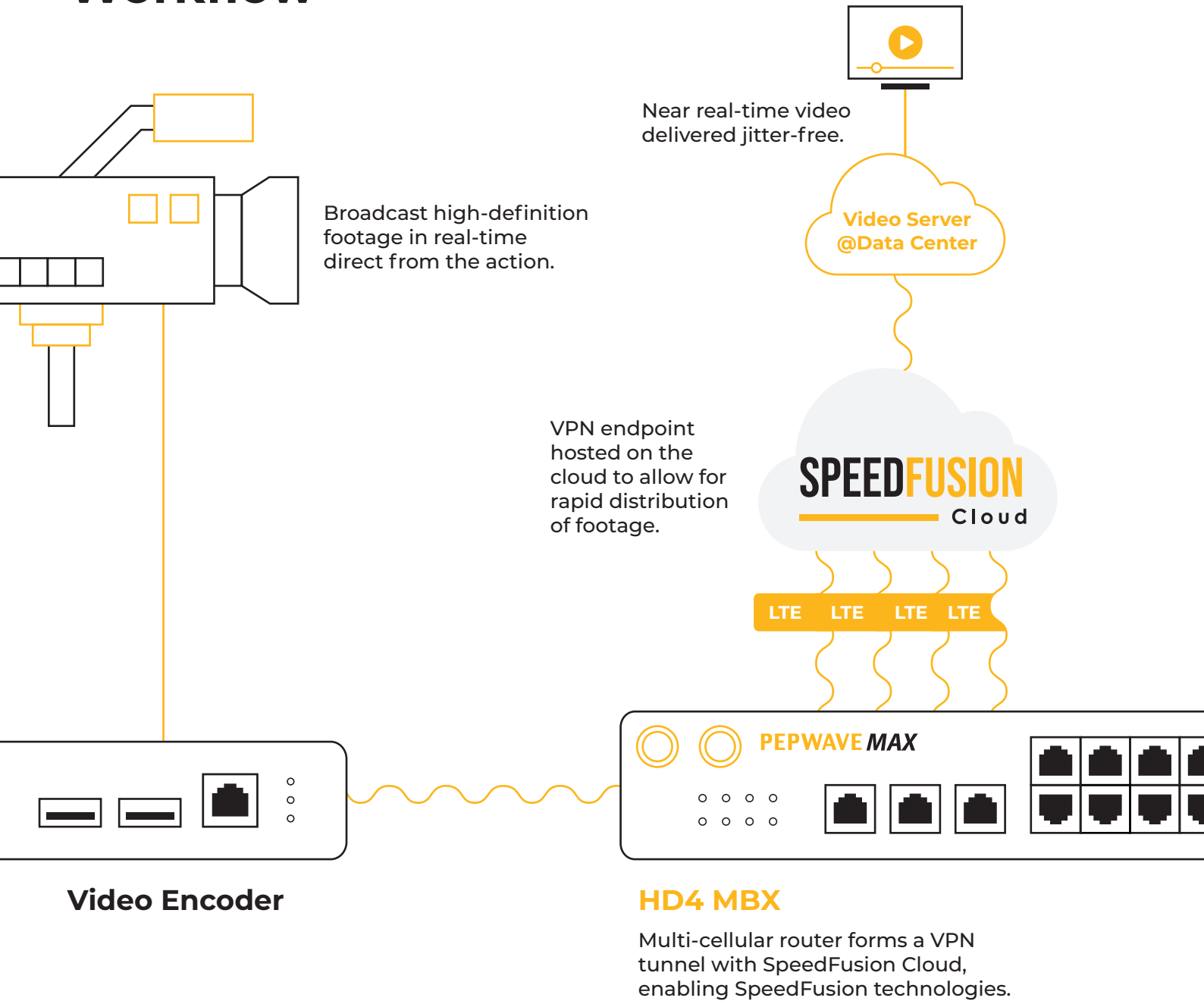
Events

HD4 MBX

- 2.5Gbps throughput
- Upgradable to 5G
- SpeedFusion technology



Workflow



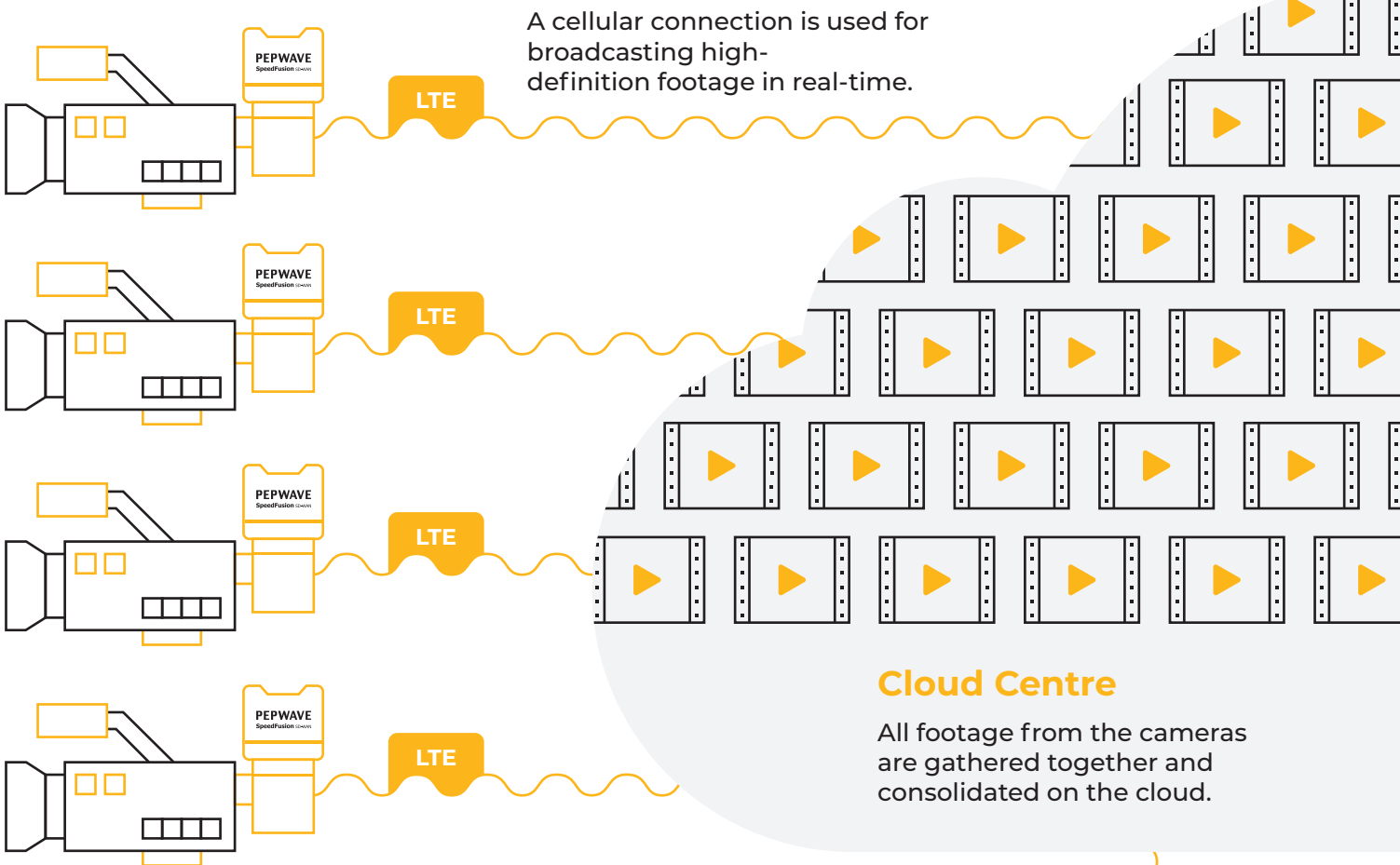
Media Broadcasting

SFE Camera

- Embedded to the camera
- Various connectivity options - Wi-Fi AP or WAN
- Cloud service and technology



Workflow



Cloud Centre

All footage from the cameras are gathered together and consolidated on the cloud.

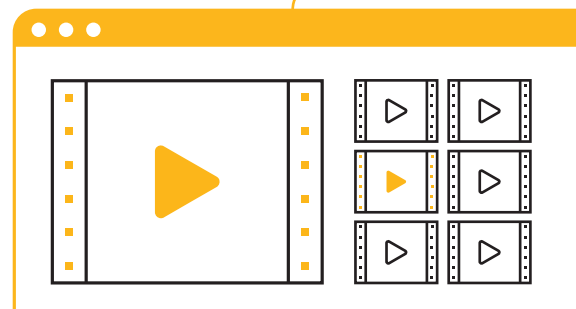
SFE Camera

Multiple cameras film the same event from different angles.



Viewers can watch the event in high definition from any angle they choose.

Internet



Film Production

SDX Pro and HD Dome

- SDX Pro deployed as a load balancer
- SIM Injector for easy SIM management
- HD Dome deployed as expandable cellular nodes



Workflow

